

# DB\* CAPMAN

## CAPACITIES UNDER CONTROL

Would you like to use the capacities and resources of your databases proactively and in a business-oriented manner? No problem with **db\* CAPMAN**, the framework for capacity and performance management.



**Efficient data collector**  
at server, instance and session level



**Comprehensive functions**  
for evaluation and display of data (e.g. tree maps)



**Ability to compare**  
database configurations (e.g. parameters, patch level)



**Anomaly detection**  
in resource consumption such as e.g. sudden increase in memory usage



**Identifying correlations**  
and trends across the environment



db\* CAPMAN

Find out more!



« With **db\* CAPMAN** from Trivadis, we are able to automatically inventory the existing Oracle database infrastructure as well as analyse and predict the demand.

Martin Berger,  
Lead of Oracle Databases,  
Hutchison 3G Austria

## YOUR BENEFITS

- Easy installation without agents on the database systems
- db\* CAPMAN supports various RDBMS products and allows benchmarking
- Requires no options or management packs to be purchased from Oracle (e.g. tuning pack)
- Platform-independent solution without proprietary components

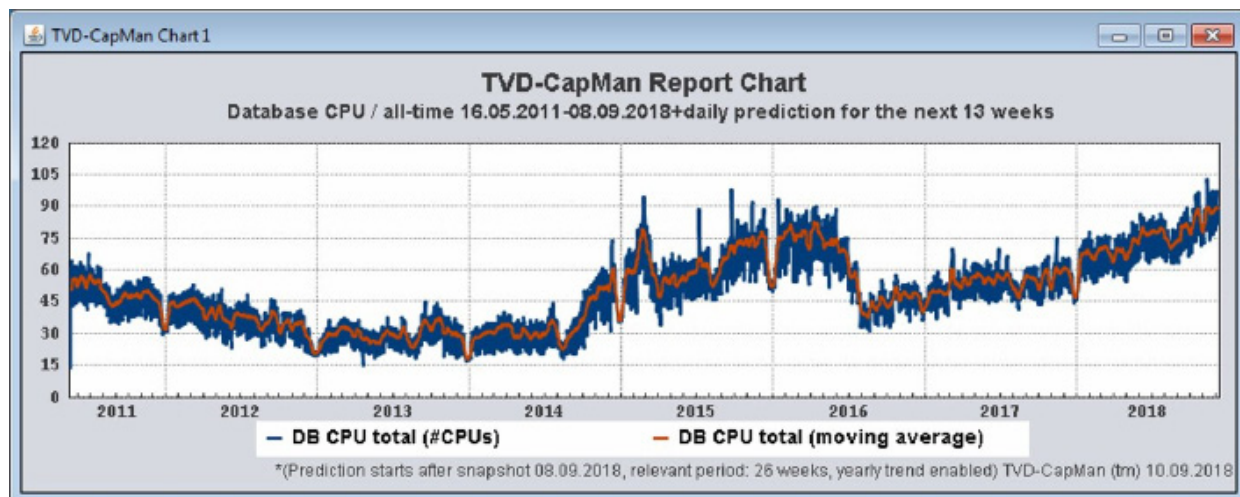


Customer example  
**Find out more!**

# FOR DECISION-MAKERS PROACTIVE CAPACITY PLANNING

An IT infrastructure without proactive and business-oriented capacity planning is like running a company without a business plan. This makes capacity management and forecasting one of your most important tasks in database operation. Here you can create the essential foundations for cost savings and efficiency improvements. Our **db\* CAPMAN** tool provides you with all the basics.

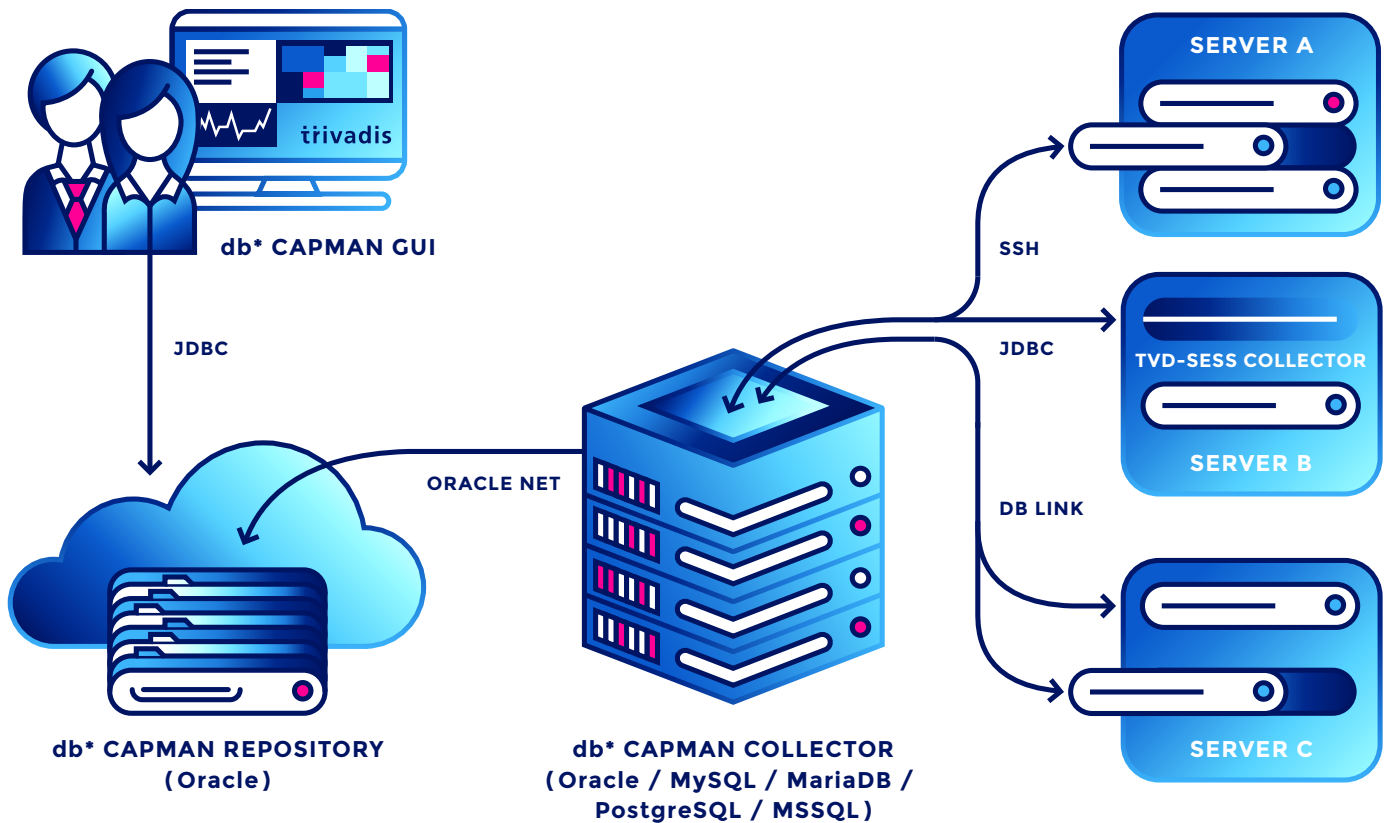
## REAL EXAMPLE DB\* CAPMAN CPU INCREASE BY 50% SINCE 2011



# FOR TECHNICIANS

## ARCHITECTURE DB\* CAPMAN IN DETAIL

**db\* CAPMAN** offers you extensive capacity and resource planning options for Oracle and MySQL database systems. A central data collector continuously collects all relevant performance and configuration data from your servers and databases. The collected data can be displayed and evaluated in countless reports and diagrams via the graphical user interface, based on Java. The time period and level of detail can be set very flexibly in order to be able to make accurate statements. Trend analyses can also be used to provide forecasts of resource requirements (CPU, I/O, memory).



# OUR OFFER

## DB\* CAPMAN



**db\* CAPMAN** can be licensed for unlimited use, including regular updates. We also offer time-limited use so that you can familiarise yourself with the product as part of a consolidation project, for example. The number of CPU cores of the systems concerned are relevant as a metric for licensing. Of course, we also support you in the installation, evaluation and interpretation of the data.

## MY NOTES



## CONTACT

**Roland Stirnimann**

Trivadis AG

Sägereistrasse 29

CH-8152 Glattbrugg

+41 58 459 55 55

roland.stirnimann@trivadis.com

[TRIVADIS.COM/EN/OFFERS/DBSTAR](https://trivadis.com/en/offers/dbstar)



vCard



**trivadis** Part of Accenture